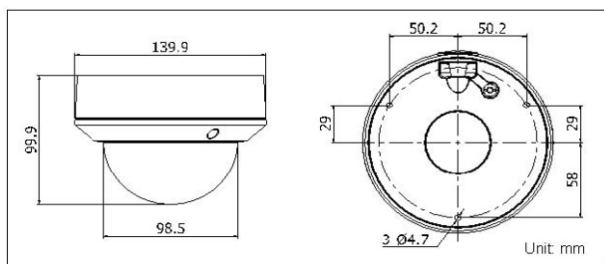




Key Features

- 1/3" progressive scan CMOS image sensor
- 3 Megapixel resolution (2048 x 1536)
- 6 simultaneous users
- H.264/MJPEG streaming
- Full HD 1080p Real time video
- Day/night auto switch
- Onboard storage (up to 32GB)
- PoE
- Vandal proof
- Compatible with Videoswitch Net Recorders
- Compatible with Vi-Viewer1000 & Vi-Viewer4000



Order Codes

Vi-C5118 3MPixel IP, Dome Camera, IP66,
2.8-12mm VF

Specification

Camera

Image sensor 1/3" progressive scan CMOS
Minimum Illumination 0.07 lux@F1.2, AGC on, 0 lux with IR

Shutter 1/25s to 1/100,000s
Lens Varifocal 2.8 ~ 12 mm @F1.4
Angle of view: 98° ~ 30.5°
Lens mount Ø14
Auto iris DC drive
Wide dynamic range Digital WDR
Backlight compensation Yes, zone configurable
Angle Adjustment Pan: 0° ~ 360°, tilt: 0° ~ 75°, rotation: 0°~ 360°
Recommended orientation Horizontal or vertical
Day & Night IR cut filter auto switch

Compression

Video compression H.264 /MJPEG
Bit rate 32 Kbps ~ 16 Mbps
Audio compression G.711/G.726
Audio bit rate 64kbps (G.711)/ 16kbps(G.726)
Dual stream Yes (different video compression)
Simultaneous users 6

Image

Max image resolution 2048 × 1536
Frame rate 12.5 fps (2048 × 1536)
25 fps (1920 × 1080)
25 fps (1280 × 720)
Image settings Saturation, brightness, contrast adjustable through client software or web browser

Network

Network storage NAS
Alarm trigger Motion detection, network disconnect , IP address conflict, storage exception, storage error
Protocols TCP/IP, HTTP, DHCP, DNS, DDNS, RTP/RTSP, PPPoE, SMTP, NTP (SNMP, HTTPS, SIP, FTP, SRTP, 802.1x, IPv6 optional)
Security Password protection, watermark
Compatibility Videoswitch, ONVIF, PSIA, CGI
General functions Flickerless, dual stream, heartbeat, mirror, user authentication, video mask, watermark

Interface

Communications interface 1 RJ45 10M / 100M ethernet port
Local storage Built-in Micro SD slot, up to 32 GB

Physical & Environmental

Operating temperature -30°C ~ 60°C
Humidity 90% or less (non-condensing)
Power supply 12 VDC ± 10%, PoE (802.3af)
Power consumption 5.5W max
Impact protection IEC60068-275Eh, 50J; EN50102, up to 1k10
Ingress protection IP66
IR Range Up to 20m
Dimensions Ø139.9mm x 99.9mm
Weight 1000g

